



# TE KURA O MAUNGATAPU MAUNGATAPU SCHOOL

## School newsletter - Week 6 Term 1 2025

School roll - 565

### Kia ora koutou katoa.

Welcome to our second newsletter of the year. We always allow for a 6 week transition period for children to fully adjust back to school routines and expectations. Students start to feel more comfortable with their school and environment at this time. Our mission statement remains 'Nurturing our learners ki Te Ao Tūroa' meaning 'Our environment nurtures our learners' In this statement, we are all seen as 'learners'; teachers, parents, whānau and our tamariki'. We all have a role to play to ensure our children achieve and experience success.

Our key priorities this year which form part of our annual plan are:

- Effective pedagogy
- STEAM - Future Skills
- Good to Great focus areas
- Mathematics/Pāngarau
- Early Learners

### End of 2024 student achievement data

Our end of year (2024) student achievement data shows our learning progress and achievement, which is measured against the NZ Curriculum for mainstream and Te Marautanga for Te Pūwhāriki.

Below is a snap shot of our achievement data:

### Mainstream end of year student achievement data 2024 NZC at/above curriculum expectations.

	Year 1	Year 2	Year 3	Year 4	Year 5	Year 6
Reading	92%	71%	65%	77%	70%	91%
Writing	89%	74%	58%	65%	57%	65%
Maths	96%	80%	62%	77%	72%	68%

### Te Pūwhāriki end of year student achievement data 2024 Marautanga at/above Marautanga expectations.

	Yr 1	Yr 2-3	Yr 3-4	Yr 5-6	Yr 7/8
Reo ā waha	96%	93%	95%	96%	93%
Pānui	98%	98%	98%	95%	90%
Tuhituhi	95%	98%	93%	93%	90%
Pāngarau	96%	95%	97%	93%	93%

### Absenteeism

Parents are asked to contact the school if their child will be absent or late that day.

Please keep your contact details up to date, especially your emergency contact details. Our office staff will notify you if your child has any injury that is of concern.

### Student attendance

Whilst our attendance data last year showed that we sat above the national average, there are definitely areas where we can move from 'Good' to 'Great' which will be a school wide focus this year.

We will have attendance newsletters shared to junior school learners (Year 0-2), Middle/Senior school learners (Year 3-6) and Te Pūwhāriki, to better inform and update parents of attendance trends and concerns.

We will also send digital media content (videos) involving student voice, to push for our attendance goal of moving from 'Good to Great'.

#### Highest Attendance Class

91.71%

#### School wide attendance

85.36%

Goal for 2025 = 90%



The MASH meeting held on Monday 3 March was very successful. We had a good number of new parents show up and we were able to plan some simple fundraising events for the term, starting with a mufti day on Friday 28 March.

This year we are aiming to buy a new gazebo and upgrade our school sports uniforms.

Last year MASH managed to raise a significant amount of funds to purchase solar panels for our STEAM room. We will be looking at purchasing and installing these solar panels this year.

## He mihi

Thank you Tauranga PaknSave and The Warehouse Fraser Cove for kindly donating products for our Breakfast Club. Our Breakfast Club operates from 8.30am every school day, from the hall foyer/kitchen.

## Māori whānau consultation survey

On Wednesday 5 March, Te Pūwhāriki had their first whānau hui for the year, outlining expectations for the year ahead. The hui covered the following kaupapa

1. EOTC
2. Police vetting
3. Roll size and limited space for new enrolments
4. Te Reo Māori
5. Pangarau and mahi kainga, incl panui (reading)
6. Kapa Haka
7. MASH and BOT elections 2025

The survey link below is intended for all whānau Māori, to gather whanau voice for any aspirations you may for you child/mokopuna.

Please take 5 minutes to complete the survey link attached.

[https://docs.google.com/forms/d/e/1FAIpQLSd7YYEVTXFOW7dBjCh3BVep13\\_JiGSR8tiC4\\_ydichk61PYrw/viewform?usp=sharing](https://docs.google.com/forms/d/e/1FAIpQLSd7YYEVTXFOW7dBjCh3BVep13_JiGSR8tiC4_ydichk61PYrw/viewform?usp=sharing)

## School docs policy website

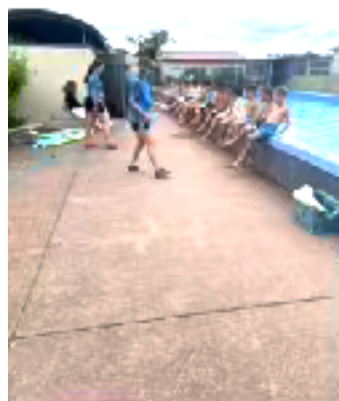
Below is the link to SchoolDocs, a website for our school policies and procedures.

The school works on a subscription basis with SchoolDocs to maintain, update, and review our policies. SchoolDocs provides us with a comprehensive core set of policies, which have been well researched and follow the Ministry of Education National Administration Guidelines. The policies and procedures are tailored to our school and where necessary, SchoolDocs updates, modifies, or creates policies in response to changes in legislation or Ministry guidelines. Our board has the opportunity to view changes/additions and comment on them before they are implemented.

We invite you to visit the site by following these steps

1. Go to [schooldocs.co.nz](https://schooldocs.co.nz)
2. Click **Search for your school**.
3. Start typing the school's name and select it from the dropdown list.
4. Enter the username: maungatapu and password: tui

## Water Skills for Life



The WSFL team have been in every day - all day since week 4, providing professional swimming lessons for our tamariki. We appreciate their time and effort.

## Super Road patrollers



Our road patrollers deserve a medal. Last Thursday they completed their refresher training alongside Constable Dennis Bidois and Constable Lis Chambers.

## Upcoming events

- Teacher Only Day                      Wednesday 12 March
- Top Schools                                Friday 14 March
- Sailing Year 5/6 starts                Wednesday 19 March
- Hui Whakanui (juniors)                Friday 21st March
- Pool keys due back                      Friday 21st March
- MASH Mufti Day                         Friday 28th March
- ERO visit and Pōwhiri                Tuesday 1 April
- MTA Lego workshops                 Wednesday 2 April